

**PolyPromos**

June 2021 – August 2021

**Polymaster**

# Winter specials

**SAVE  
\$260**

**22,500ltr**

**RWT22500**



DIA 3560 x H 2800mm  
Inlet H : 2470mm



**SAVE  
\$350**

**SAVE  
\$300**

**SAVE  
\$2,130**

**DMP400E**

**DMP200E**

**DMPFT1200**

\* Mountain Blue

Support Australian Owned & Made

Freecall 1800 062 064

→ [polymaster.com.au](http://polymaster.com.au)

## Round Rainwater Tanks

### ROUND TANK FEATURES

- Certified to Australian Standards AS/NZ4766
- Extra thick walls for maximum strength.
- Double strength UV+ resin ensures ultimate protection against Australia's harsh sun.
- Available in 22 COLORBOND® colours

### ROUND TANK STANDARD FITTINGS

- 40mm brass outlet & ball valve
- 90mm overflow fitting
- Mosquito proof leaf screen



\* Polymaster will not be held liable for incorrect colour impressions, request your Polymaster colour sample to view colours.



# Stock Troughs & Drinkers

## Master Tub Troughs

<b>MT2</b> <b>200ltr</b> <small>DIA 970 x H 375mm</small>  <b>\$340</b>	<b>MT6</b> <b>600ltr</b> <small>DIA 1400 x H 520mm</small>  <b>\$510</b>	<b>MT12</b> <b>1,200ltr</b> <small>DIA 1765 x H 600mm</small>  <b>\$750</b>
--	---	---

### FEATURES

- Very strong, robust design
- 75mm bung for easy cleaning
- Full float protection
- Drain cap at very base of trough so max. amount of water will empty out when draining
- 'Quick Release' float cover
- Easy service 1" float valve
- Higher rating valves available on request

## Stock Watering Trough

**SWT4500**  
**\$2,300**  
DIA 2500 x H 2000mm



### FEATURES

- 25 mm float valve mounted in bottom of wall to maintain level in trough
- 75 mm drain cap in trough
- Inspection cover
- 25 mm tank inlet and 25 mm float valve supplied
- Full float cover to protect valve from stock damage
- Inlet connection
- To order the trough only use product code SWT15. Capacity is 1500 litre

## Supa Troughs

<b>SPT5</b> <b>250ltr</b>  <b>\$420</b> <small>L 1500 x W 600 x H 375mm</small>	<b>SPT9</b> <b>450ltr</b>  <b>\$530</b> <small>L 2700 x W 600 x H 375mm</small>	<b>SPT12</b> <b>600ltr</b>  <b>\$740</b> <small>L 3700 x W 600 x H 375mm</small>
--	--	---

- Unique all-poly construction
- Durable and portable
- No chance of rusting

- Great for watering large numbers
- Can service two paddocks either side of the fence

- Ideal for both the broad acre grazier and the hobby farmer
- Central fill point spreads freshwater for animal satisfaction

## Stable Drinker

8ltr

PT48W

SAVE  
\$41

**\$99**



25ltr

PT49W

SAVE  
\$36

**\$139**



### FEATURES

- Moulded float cover
- Very strong solid mounting flanges
- Drain bung for cleaning
- Available with optional brackets for fence hanging (PT14BR and PT49BR)
- Additional drain caps available

## Diesel Transfer Unit with Trailer

**HUGE  
SAVINGS!**

1200ltr

DMPFT1200

**\$11,500**

SAVE  
\$2,130



### FEATURES

Road registerable (VIN plated) and manufactured from heavy duty hot dipped galvanised steel. Pump, meter, hose and auto nozzle is stored securely in a lockable Poly toolbox. Safety features includes brakes, lights and reflectors, 7 pin flat trailer plug and safety chain.

- A 12V Diesel Piusi Fast Flow Pump (85LPM)
- Auto shutoff Trigger Nozzle
- Mechanical Fluid Meter
- Earthing strap
- Compliance plate – Road registerable
- Lockable Filler Cap
- Lockable Poly Toolbox mounted forward
- Emergency Breakaway Protection
- Breather Vent
- In-molded baffles
- 15" wheels – 5 stud pattern
- Hydraulic Brakes
- Jockey wheel

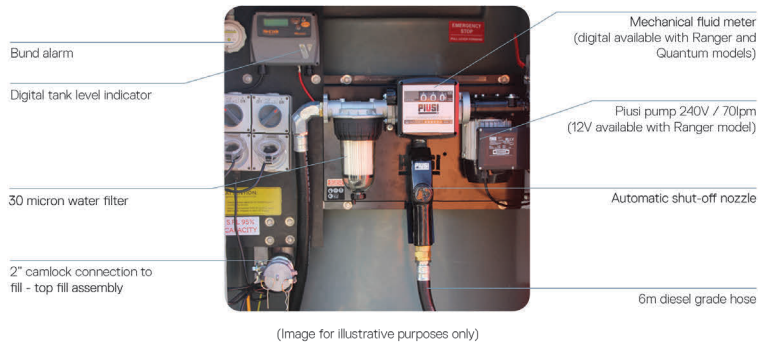
# Diesel Tanks & Bulk Storage

## 10,000ltr DIESELMASTER BUNDED TANK - ESSENTIAL

DMDS10000E-240V

**\$14,600**

- Quality Italian Piusi 240V Diesel pump up to 70LPM
- 6mtr hose with automatic trigger nozzle
- Digital level indicator
- Bund alarm
- Mechanical overfill protection
- 2" camlock & ball valve for quick filling
- 30 micron water capture filter
- Mechanical fluid meter
- Lockable secure cabinet to house equipment
- External bunded tank and cabinet constructed of UV sun tough material



## The Essential Diesel Ute Pack

### 200ltr DIESEL UTE PACK L 1000 x W 750 x H 605mm



#### FEATURES

- Upto 50LPM Piusi Diesel Pump
- Lockable lid – protects all components
- 5 year warranty

### 400ltr DIESEL UTE PACK L 1620 x W 750 x H 665mm



- UV protected
- Earth strap
- Auto trigger nozzle

### 400ltr DIESEL CUBE UTE PACK L 930 x W 1200 x H 685mm



- 4mtr Diesel-grade hose
- Isolation switch
- Alligator clips



## Footrot Baths

80ltr

**RACE TYPE**

RFRB

L 2400 x W 480 x H 200mm



**\$350**

Encourages sheep to walk through the solution in a single file, while keeping their hooves in the bath with unique pyramid shaped ribs.

- Lightweight for easy of handling. Non-slip floor
- Will not rust, chip or flake. Fully chemical resistant
- Dimples in base open hooves, ensuring penetration

300ltr

**STANDING TYPE**

FRB

L 2530 x W 1000 x H 200mm



**\$520**

Controls footrot disease whilst its wider design allows sheep to stand next to each other to help to reduce levels of stress during this process.

- Smooth, hygienic and easily cleaned
- End to end linking facility – join any amount together
- Not recommended for cattle & horses

## Handistep

HSP

**\$125**

**SAVE \$45**

- SWL 120kg
- Dimensions 700L x 520W x 670H



## Feed Storage Bin

200ltr

FSB200

**\$200**

**SAVE \$60**

- Multi-purpose bin
- Modular design to allow for side-by-side placement in storage arrays
- Vermin proof
- Cleaning is made easy due to smooth and flat interior surfaces.



## Septic Tanks

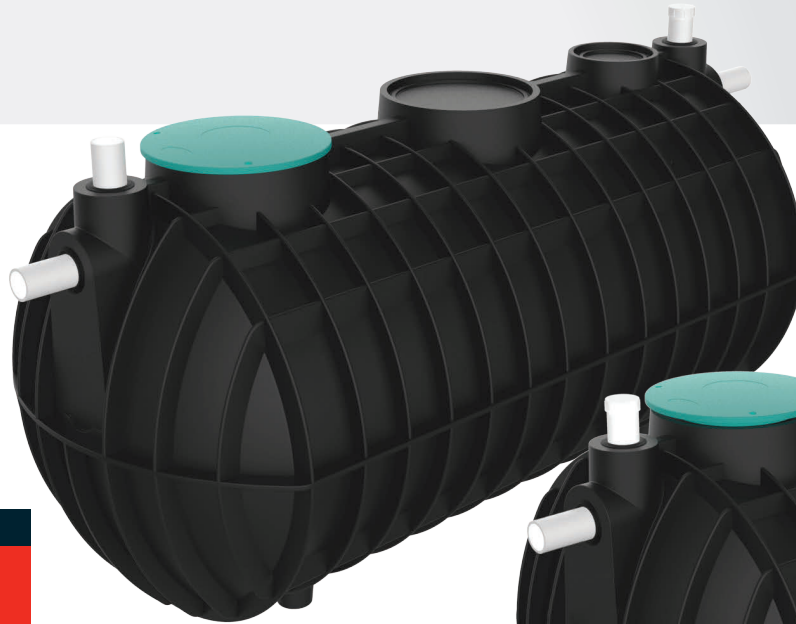
4,550ltr

**SEPTIC TANK**

ST4550

**\$3,000**

L 3520 x W 1640 x H 1665mm



3,100ltr

**SEPTIC TANK**

ST3100

**\$2,160**

L 2450 x W 1640 x H 1665mm



### FEATURES

- 10 minute hook-up – fittings and baffle are pre-installed
- One-piece tank with lifting lugs – lightweight and easy to handle.
- Australian manufactured – offering you maximum support and service
- Self-anchoring – does not require concrete
- Tested and certified to AS/NZS 1546.1:2008 – assurance of maximum performance

\* Optional Riser Extension available – W 555 x H 530mm

## Tradesman ToolBox

200ltr

TBC20

**\$270**

- Flush zinc mounted hardware
- Standard with removable internal tray
- Dimensions(mm): 980L X 390W X 600H



**SAVE  
\$80**



## DRUMSAFE BUNDED PALLET

DSP

**\$450**

L 1280 x W 1280 x H 335mm

### FEATURES

- Accommodates 4 x 205L drums
- Exceeds 110% of 205L drum capacity
- Anti tip bars to ensure the pallet does not tip even if unevenly balanced on forks

## POLY FEED SCOOP

PSC

**\$22**



### FEATURES

- All poly strong construction
- Holds 2.5kg of pellets

## LEAD SUSPENDER STAND

LSS1

**\$190**

SAVE  
\$65



## DINKUM DOGHOUSE 3

TDD3

**\$195**

SAVE  
\$80



New 2021-2022 Catalogue

# AVAILABLE NOW

## Instore & Online

Visit [polymaster.com.au](http://polymaster.com.au)



YOUR LOCAL DISTRIBUTOR